



# Child protection and safeguarding

Grove Road Primary School

**Approved by:** Full Governing Body **Date:** September 2018

**Last reviewed on:** September 2020

**Next review due by:** September 2021

## Contents

Important contacts .....	2
1. Aims.....	3
2. Legislation and statutory guidance .....	3
3. Definitions .....	4
4. Equality statement .....	4
5. Roles and responsibilities .....	5
6. Confidentiality and Record Keeping .....	6
7. Recognising abuse and taking action.....	8
8. Communicating with parents .....	17
9. Transfer of pupil records.....	17
10. The use of restraint.....	17
11. E-Safety .....	18
12. Allegations against staff.....	18
13. Safer Recruitment.....	22
14. Pupils with SEND .....	25
15. Pupils with a Social Worker .....	25
16. Pupils who are LAC .....	26
17. Mobile phones and cameras .....	26
18. Complaints and concerns about the schools safe guarding procedures.....	27
19. Raising awareness of and links to this policy.....	27
20. Monitoring.....	28
Appendix 1 - Types of Abuse.....	29
Appendix 2 - Ten points to consider.....	30

## Important contacts

ROLE/ORGANISATION	NAME	CONTACT DETAILS
Designated safeguarding lead (DSL)	Mrs Lyn Gray	02085706132 head@groveroad.hounslow.sch.uk
Deputy DSL	Mrs Grace Beckford	02085706132 gbeckford@groveroad.hounslow.sch.uk
Local authority designated officer (LADO)	Ms. Grace Murphy (W to F) Ms. Sarah Paltenghi (M to W)	grace.murphy@hounslow.gov.uk__0208 583 4933 sarah.paltenghi@hounslow.gov.uk__0208 583 3423
SAAM (Safeguarding advice and allegations Management duty system)		02085832222 0208 583 6600 (option 2)
CAMHS (Child & Adolescent Mental Health Service)	<a href="http://www.westlondoncamhs.nhs.uk">www.westlondoncamhs.nhs.uk</a>	02084832050 <a href="mailto:Hounslow.camhs@nhs.net">Hounslow.camhs@nhs.net</a>
Chair of governors	Mrs Mobola Ike	mike@groveroad.hounslow.sch.uk
PREVENT Education Officer	Mr Karmjit Rekhi Mrs Joan Conlon	02085832197 <a href="mailto:Karmjit.Rekhi@hounslow.gov.uk">Karmjit.Rekhi@hounslow.gov.uk</a> 07817079190 <a href="mailto:Joan.conlon@hounslow.gov.uk">Joan.conlon@hounslow.gov.uk</a>
Channel helpline		020 7340 7264

---

## **1. Aims**

---

The school aims to ensure that:

- Appropriate action is taken in a timely manner to safeguard and promote children's welfare
- All staff are aware of their statutory responsibilities with respect to safeguarding
- Staff are properly training in recognising and reporting safeguarding issues
- Equipping children with the skills needed to keep them safe and establishing a safe environment in which children can learn and develop.

---

## **2. Legislation and Statutory Guidance**

---

This policy is based on the Department for Education's statutory guidance Keeping Children Safe in Education (2020) and Working Together to Safeguard Children (2018), and the Governance Handbook. We comply with this guidance and the arrangements agreed and published by our 3 local safeguarding partners.

This policy is also based on the following legislation:

- Section 175 of the Education Act 2002, which places a duty on schools and local authorities to safeguard and promote the welfare of pupils
- The School Staffing (England) Regulations 2009, which set out what must be recorded on the single central record and the requirement for at least one person conducting an interview to be trained in safer recruitment techniques
- The Children Act 1989 (and 2004 amendment), which provides a framework for the care and protection of children Section 5B (11) of the Female Genital Mutilation Act 2003, as inserted by section 74 of the Serious Crime Act 2015, which places a statutory duty on teachers to report to the police where they discover that female genital mutilation (FGM) appears to have been carried out on a girl under 18
- Statutory guidance on FGM, which sets out responsibilities with regards to safeguarding and supporting girls affected by FGM
- The Rehabilitation of Offenders Act 1974, which outlines when people with criminal convictions can work with children
- Schedule 4 of the Safeguarding Vulnerable Groups Act 2006, which defines what 'regulated activity' is in relation to children
- Statutory guidance on the Prevent duty, which explains schools' duties under the Counter-Terrorism and Security Act 2015 with respect to protecting people from the risk of radicalisation and extremism
- All schools with pupils aged under 8 add:
- The Childcare (Disqualification) and Childcare (Early Years Provision Free of Charge) (Extended Entitlement) (Amendment) Regulations 2018 (referred to in this policy as the "2018 Childcare Disqualification Regulations") and Childcare Act 2006, which set out who is disqualified from working with children

This policy also meets requirements relating to safeguarding and welfare in the statutory framework for the Early Years Foundation Stage.

In addition, we will abide by the child protection procedures of the Hounslow Safeguarding Children Partnership - [www.hcsb.org.uk](http://www.hcsb.org.uk) and CAMHS (Child & Adolescent Mental Health Service- [www.westlondoncamhs.nhs.uk](http://www.westlondoncamhs.nhs.uk)).

The Children Act 2004 defines safeguarding and promoting the welfare of children as;

- protecting children from abuse and neglect
- preventing impairment of their health or development, and
- ensuring that they receive safe and effective care so as to enable them to have the optimum life chances

---

### **3. Definitions**

---

Safeguarding and promoting the welfare of children means:

- Protecting children from maltreatment
- Preventing impairment of children's mental and physical health or development
- Ensuring that children grow up in circumstances consistent with the provision of safe and effective care
- Taking action to enable all children to have the best outcomes

**Child protection** is part of this definition and refers to activities undertaken to prevent children suffering, or being likely to suffer, significant harm.

**Abuse** is a form of maltreatment of a child, and may involve inflicting harm or failing to act to prevent harm. Appendix 1 explains the different types of abuse.

**Neglect** is a form of abuse and is the persistent failure to meet a child's basic physical and/or psychological needs, likely to result in the serious impairment of the child's health or development. Appendix 1 defines neglect in more detail.

**Sexting** (also known as youth produced sexual imagery) is the sharing of sexual imagery (photos or videos) by children

**Children** includes everyone under the age of 18.

The following 3 safeguarding partners are identified in Keeping Children Safe in Education (and defined in the Children Act 2004, as amended by chapter 2 of the Children and Social Work Act 2017). They will make arrangements to work together to safeguard and promote the welfare of local children, including identifying and responding to their needs:

- The local authority (LA)
- The Hounslow Safeguarding Partnership
- The chief officer of police for Hounslow

---

### **4. Equality statement**

---

Some children have an increased risk of abuse, and additional barriers can exist for some children with respect to recognising or disclosing it. We are committed to anti-discriminatory practice and recognise children's diverse circumstances. We ensure that all children have the same protection, regardless of any barriers they may face.

We give special consideration to children who:

- Have special educational needs (SEN) or disabilities (see section 14)

- Are young carers
- May experience discrimination due to their race, ethnicity, religion, gender identification or sexuality
- Have English as an additional language
- Are known to be living in difficult situations – for example, temporary accommodation or where there are issues such as substance abuse or domestic violence
- Are at risk of FGM, sexual exploitation, forced marriage, or radicalisation
- Are asylum seekers
- Are at risk due to either their own or a family member's mental health needs
- Are looked after or previously looked after (see section 15)

---

## **5. Roles and responsibilities**

---

Safeguarding and child protection is everyone's responsibility. This policy applies to all staff, volunteers and governors in the school and is consistent with the procedures of the 3 safeguarding partners. Our policy and procedures also apply to extended school and off-site activities.

### **5.1 All staff**

All staff and governors will read and understand part 1 and Annex A of the Department for Education's statutory safeguarding guidance, Keeping Children Safe in Education, and review this guidance at least annually.

All staff members will undertake safeguarding and child protection training at induction, including on whistle-blowing procedures, to ensure they understand the school's safeguarding systems and their responsibilities, and can identify signs of possible abuse or neglect. This training will be regularly updated and will be in line with advice from the 3 safeguarding partners.

All staff will have training on the government's anti-radicalisation strategy, Prevent, to enable them to identify children at risk of being drawn into terrorism and to challenge extremist ideas.

Staff will also receive regular safeguarding and child protection updates (for example, through emails, e-bulletins and staff meetings) as required, but at least annually.

Contractors who are provided through a private finance initiative (PFI) or similar contract will also receive safeguarding training.

Volunteers will receive appropriate training, if applicable.

All staff and those working at Grove Road will need to be aware of:

- Our systems which support safeguarding, including this child protection and safeguarding policy, the staff Handbook and Code of Conduct, the role and identity of the designated safeguarding lead (DSL) and deputy DSL, Anti-bullying & behaviour policy, and the safeguarding response to children who go missing from education
- The early help process (sometimes known as the common assessment framework) and their role in it, including identifying emerging problems, liaising with the DSL, and sharing information with other professionals to support early identification and assessment
- The process for making referrals to local authority children's social care and for statutory assessments that may follow a referral, including the role they might be expected to play
- What to do if they identify a safeguarding issue or a child tells them they are being abused or neglected, including specific issues such as FGM, and how to maintain an appropriate level of confidentiality while liaising with relevant professionals

- The signs of different types of abuse and neglect, as well as specific safeguarding issues, such as child sexual exploitation (CSE), indicators of being at risk from or involved with serious violent crime, FGM and radicalisation

Section 7 of this policy outlines in more detail how staff are supported to do this.

## 5.2 The designated safeguarding lead (DSL)

The DSL is a member of the senior leadership team. Our DSL is Mrs Lyn Gray- Headteacher. The DSL takes lead responsibility for child protection and wider safeguarding.

During term time, the DSL will be available during school hours for staff to discuss any safeguarding concerns.

For out of school hours the following contact number can be used - 07792337708

When the DSL is absent, the Deputy DSL Mrs Grace Beckford – Deputy headteacher – will act as cover. If the DSL and DDSL are not available, Mrs Sharon Hancock- Admin Officer will act as cover (for example, during out-of-hours/out-of-term activities).

The DSL will be given the time, funding, training, resources and support to:

- Provide advice and support to other staff on child welfare and child protection matters
- Take part in strategy discussions and inter-agency meetings and/or support other staff to do so
- Contribute to the assessment of children
- Refer suspected cases, as appropriate, to the relevant body (local authority children's social care, Channel programme, Disclosure and Barring Service, and/or police), and support staff who make such referrals directly

The DSL will also keep the headteacher informed of any issues, and liaise with local authority case managers and designated officers for child protection concerns as appropriate.

The full responsibilities of the DSL and DDSL are set out in their job description. The DSL and DDSL will undertake child protection and safeguarding training at least every 2 years.

In addition, they will update their knowledge and skills at regular intervals and at least annually (for example, through e-bulletins, meeting other DSLs, or taking time to read and digest safeguarding developments).

They will also undertake Prevent awareness training.

## 5.3 The governing board

The governing board will approve this policy at each review, ensure it complies with the law and hold the headteacher to account for its implementation.

The governing board will appoint a safeguarding Governor to monitor the effectiveness of this policy in conjunction with the full governing board. This is always a different person from the DSL. For Grove Road school this is Mr Hardeep Walia – [hwalia.313@lgflmail.org](mailto:hwalia.313@lgflmail.org)

The chair of governors will act as the 'case manager' in the event that an allegation of abuse is made against the headteacher, where appropriate (see appendix 3).

All governors will read Keeping Children Safe in Education. All governors receive training about safeguarding, to make sure they have the knowledge and information needed to perform their functions and understand their responsibilities.

As the chair of governors may be required to act as the 'case manager' in the event that an allegation of abuse is made against the headteacher, they receive training in managing allegations for this purpose.

## 5.4 The headteacher

The headteacher is responsible for the implementation of this policy, including:

- Ensuring that staff (including temporary staff) and volunteers are informed of our systems which support safeguarding, including this policy, as part of their induction

- Communicating this policy to parents when their child joins the school and via the school website
- Ensuring that all staff undertake appropriate safeguarding and child protection training and update this regularly
- Acting as the 'case manager' in the event of an allegation of abuse made against another member of staff or volunteer, where appropriate (see appendix 3)
- Ensure that their own DSL training is up to date

---

## **6. Confidentiality and record keeping**

---

We will hold records in line with our records retention schedule.

All safeguarding concerns, discussions, decisions made and the reasons for those decisions, must be recorded in writing. If you are in any doubt about whether to record something, discuss it with the DSL.

Non-confidential records will be easily accessible and available. Confidential information and records will be held securely and only available to those who have a right or professional need to see them.

Safeguarding records relating to individual children will be retained for a reasonable period of time after they have left the school.

If a child for whom the school has, or has had, safeguarding concerns moves to another school, the DSL will ensure that their child protection file is forwarded promptly and securely, and separately from the main pupil file. In addition, if the concerns are significant or complex, and/or social services are involved, the DSL will speak to the DSL of the receiving school and provide information to enable them to have time to make any necessary preparations to ensure the safety of the child.

In order for us to make and hold effective and informative records we try to ensure:

- Timely information sharing is essential to effective safeguarding. Any disclosure or concern is written on the parent / child record form immediately after the disclosure. This is uploaded to the school's Safeguarding system where an instant email is sent to the DSL.
- Fears about sharing information must not be allowed to stand in the way of the need to promote the welfare, and protect the safety, of children
- The Data Protection Act (DPA) 2018 and GDPR do not prevent, or limit, the sharing of information for the purposes of keeping children safe
- If staff need to share 'special category personal data', the DPA 2018 contains 'safeguarding of children and individuals at risk' as a processing condition that allows practitioners to share information without consent if it is not possible to gain consent, it cannot be reasonably expected that a practitioner gains consent, or if to gain consent would place a child at risk
- Staff should never promise a child that they will not tell anyone about a report of abuse, as this may not be in the child's best interests
- The government's information sharing advice for safeguarding practitioners includes 7 'golden rules' for sharing information, and will support staff who have to make decisions about sharing information
- If staff are in any doubt about sharing information, they should speak to the designated safeguarding lead (or deputy)
- Confidentiality is also addressed in this policy with respect to record-keeping in allegations of abuse against staff, section 12 on page 18.

---

## 7. Recognising abuse and taking action

---

Staff, volunteers and governors must follow the procedures set out below in the event of a safeguarding issue.

Please note – in this and subsequent sections, you should take any references to the DSL to mean “the DSL (or deputy DSL)”.

### 7.1 If a child is suffering or likely to suffer harm, or in immediate danger

Make a referral to children’s social care and/or the police immediately if you believe a child is suffering or likely to suffer from harm, or in immediate danger. Anyone can make a referral. Call HSCB on 0208 583 6600 (option 2) or in an emergency dial 999.

Tell the DSL (see section 5.2) as soon as possible if you make a referral directly.

All referrals are followed up with a CFAN (Child and Family Notification Assessment) sent confidentially to [childrensocialcare@hounslow.gov.uk](mailto:childrensocialcare@hounslow.gov.uk) and then entered onto the school Safeguarding system.

### 7.2 If a child makes a disclosure to you

If a child discloses a safeguarding issue to you, you should:

- Listen to and believe them. Allow them time to talk freely and do not ask leading questions
- Stay calm and do not show that you are shocked or upset
- Tell the child they have done the right thing in telling you. Do not tell them they should have told you sooner
- Explain what will happen next and that you will have to pass this information on. Do not promise to keep it a secret
- Write up your conversation as soon as possible in the child’s own words. Stick to the facts, and do not put your own judgement on it
- Enter or upload the information onto the School Safeguarding system where an immediate email will be passed to the DSL. Alternatively, if appropriate, make a referral to children’s social care and/or the police directly (see 7.1), and tell the DSL as soon as possible that you have done so.

### 7.4 If you have concerns about a child (as opposed to believing a child is suffering or likely to suffer from harm, or is in immediate danger)

Figure 1 on page 11 illustrates the procedure to follow if you have any concerns about a child’s welfare.

Where possible, speak to the DSL first to agree a course of action.

If in exceptional circumstances the DSL is not available, this should not delay appropriate action being taken. Speak to a member of the senior leadership team and/or take advice from local authority children’s social care. You can also seek advice at any time from the NSPCC helpline on 0808 800 5000. Share details of any actions you take with the DSL as soon as practically possible.

Make a referral to local authority children’s social care directly, if appropriate (see ‘Referral’ below). Share any action taken with the DSL as soon as possible.

### Early help

Where Early Help is a more appropriate course of action, the DSL will generally lead on liaising with other agencies and setting up an inter-agency assessment as appropriate. Staff may be required to support other agencies and professionals in an early help assessment, in some cases acting as the lead practitioner.



The DSL will keep the case under constant review and the school will consider a referral to local authority children’s social care if the situation does not seem to be improving. Timelines of interventions will be monitored and reviewed.

Early Help Hub Hounslow – [www.hounslow.gov.uk/earlyhelp](http://www.hounslow.gov.uk/earlyhelp)  
Duty Line - 02085836653

## Referral

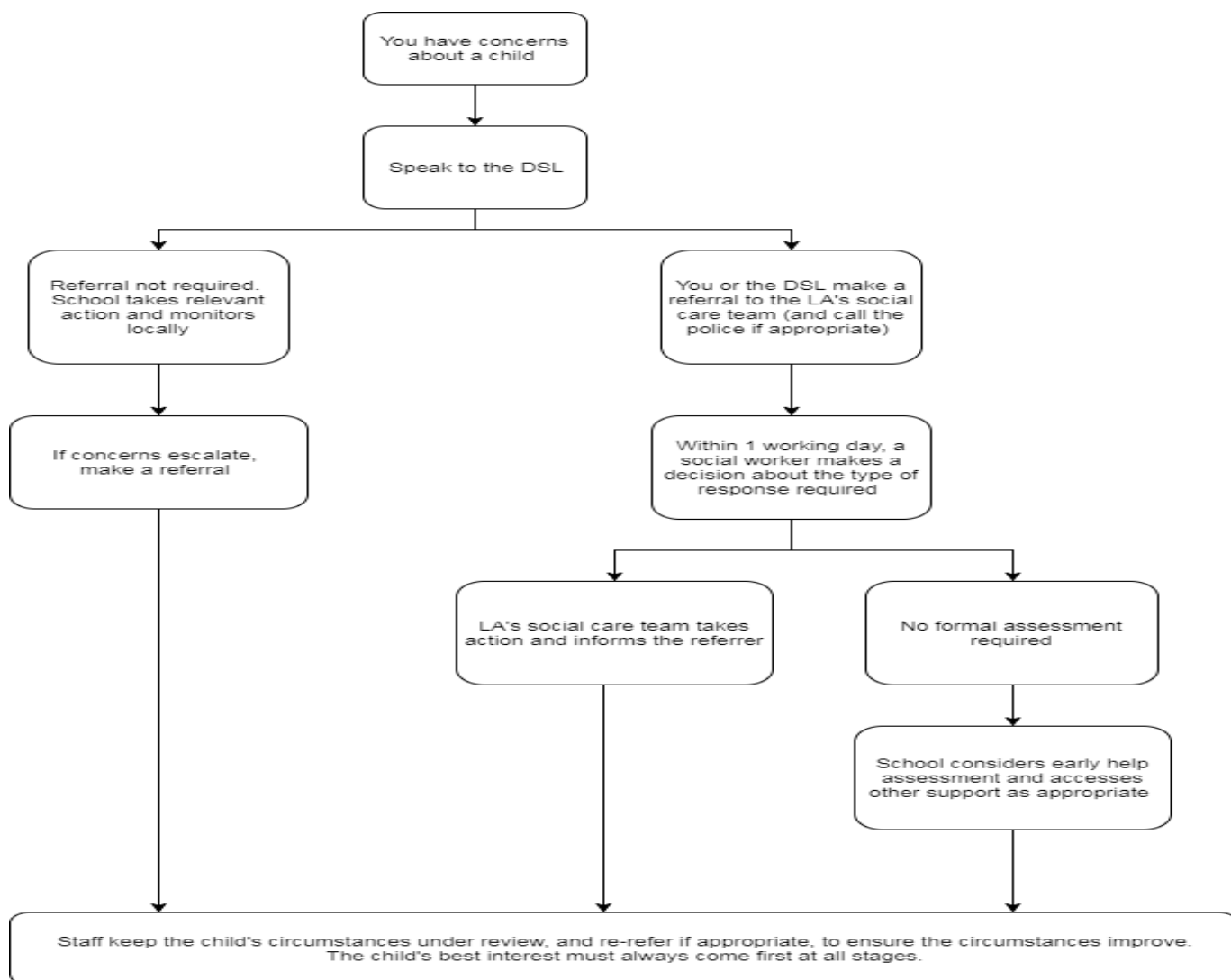
If it is appropriate to refer the case to local authority children’s social care or the police, the DSL will make the referral or support you to do so.

If you make a referral directly (see section 7.1), you must tell the DSL as soon as possible.

The local authority will make a decision within 1 working day of a referral about what course of action to take and will let the person who made the referral know the outcome. The DSL or person who made the referral must follow up with the local authority if this information is not made available, and ensure outcomes are properly recorded.

If the child’s situation does not seem to be improving after the referral, the DSL or person who made the referral must follow local escalation procedures to ensure their concerns have been addressed and that the child’s situation improves.

Children’s Social Care Team – 02085836600 (Option 2)  
[childrensocialcare@hounslow.gov.uk](mailto:childrensocialcare@hounslow.gov.uk)



## 7.4 Allegations of abuse made against other pupils

We recognise that children are capable of abusing their peers. Abuse will never be tolerated or passed off as “banter”, “just having a laugh” or “part of growing up”.

We also recognise the gendered nature of peer-on-peer abuse. However, all peer-on-peer abuse is unacceptable and will be taken seriously.

Most cases of pupils hurting other pupils will be dealt with under our school’s behaviour policy, but this child protection and safeguarding policy will apply to any allegations that raise safeguarding concerns. This might include where the alleged behaviour:

- Is serious, and potentially a criminal offence
- Could put pupils in the school at risk
- Is violent
- Involves pupils being forced to use drugs or alcohol
- Involves sexual exploitation, sexual abuse or sexual harassment, such as indecent exposure, sexual assault, upskirting or sexually inappropriate pictures or videos (including sexting)

If a pupil makes an allegation of abuse against another pupil:

- You must record the allegation and tell the DSL, but do not investigate it
- The DSL will contact the local authority children’s social care team and follow its advice, as well as the police if the allegation involves a potential criminal offence
- The DSL will put a risk assessment and support plan into place for all children involved (including the victim(s), the child(ren) against whom the allegation has been made and any others affected) with a named person they can talk to if needed
- The DSL will contact the children and adolescent mental health services (CAMHS), if appropriate

We will minimise the risk of peer-on-peer abuse by:

- Challenging any form of derogatory or sexualised language or behaviour, including requesting or sending sexual images
- Being vigilant to issues that particularly affect different genders – for example, sexualised or aggressive touching or grabbing towards female pupils, and initiation or hazing type violence with respect to boys
- Ensuring our curriculum helps to educate pupils about appropriate behaviour and consent
- Ensuring pupils know they can talk to staff confidentially
- Ensuring staff are trained to understand that a pupil harming a peer could be a sign that the child is being abused themselves, and that this would fall under the scope of this policy

## 7.5 Sexting

### Our responsibilities when responding to an incident

If you are made aware of an incident involving sexting (also known as ‘youth produced sexual imagery’), you must report it to the DSL immediately.

#### You must not:

- View, download or share the imagery yourself, or ask a pupil to share or download it. If you have already viewed the imagery by accident, you must report this to the DSL
- Delete the imagery or ask the pupil to delete it
- Ask the pupil(s) who are involved in the incident to disclose information regarding the imagery (this is the DSL’s responsibility)
- Share information about the incident with other members of staff, the pupil(s) it involves or their, or other, parents and/or carers
- Say or do anything to blame or shame any young people involved

You should explain that you need to report the incident, and reassure the pupil(s) that they will receive support and help from the DSL.

### Initial review meeting

Following a report of an incident, the DSL will hold an initial review meeting with appropriate school staff. This meeting will consider the initial evidence and aim to determine:

- Whether there is an immediate risk to pupil(s)
- If a referral needs to be made to the police and/or children's social care
- If it is necessary to view the imagery in order to safeguard the young person (in most cases, imagery should not be viewed)
- What further information is required to decide on the best response
- Whether the imagery has been shared widely and via what services and/or platforms (this may be unknown)
- Whether immediate action should be taken to delete or remove images from devices or online services
- Any relevant facts about the pupils involved which would influence risk assessment
- If there is a need to contact another school, college, setting or individual
- Whether to contact parents or carers of the pupils involved (in most cases parents should be involved)

The DSL will make an immediate referral to police and/or children's social care if:

- The incident involves an adult
- There is reason to believe that a young person has been coerced, blackmailed or groomed, or if there are concerns about their capacity to consent (for example owing to special educational needs)
- What the DSL knows about the imagery suggests the content depicts sexual acts which are unusual for the young person's developmental stage, or are violent
- The imagery involves sexual acts and any pupil in the imagery is under 13
- The DSL has reason to believe a pupil is at immediate risk of harm owing to the sharing of the imagery (for example, the young person is presenting as suicidal or self-harming)

If none of the above apply then the DSL, in consultation with the headteacher and other members of staff as appropriate, may decide to respond to the incident without involving the police or children's social care.

### **Further review by the DSL**

If at the initial review stage, a decision has been made not to refer to police and/or children's social care, the DSL will conduct a further review.

They will hold interviews with the pupils involved (if appropriate) to establish the facts and assess the risks.

If at any point in the process there is a concern that a pupil has been harmed or is at risk of harm, a referral will be made to children's social care and/or the police immediately.

### **Informing parents**

The DSL will inform parents at an early stage and keep them involved in the process, unless there is a good reason to believe that involving them would put the pupil at risk of harm.

### **Referring to the police**

If it is necessary to refer an incident to the police, this will be done through local neighbourhood police, dialling 101

### **Recording incidents**

All sexting incidents and the decisions made in responding to them will be recorded. The record-keeping arrangements set out in section 14 of this policy also apply to recording incidents of sexting.

### **Curriculum coverage**

Pupils in Year 6 are taught about the issues surrounding sexting as part of our PSHE education and computing programmes. Teaching covers the following in relation to sexting:

- What it is
- How it is most likely to be encountered

- The consequences of requesting, forwarding or providing such images, including when it is and is not abusive
- Issues of legality
- The risk of damage to people's feelings and reputation

Pupils also learn the strategies and skills needed to manage:

- Specific requests or pressure to provide (or forward) such images
- The receipt of such images

This policy on sexting is also shared with pupils in year 6 so they are aware of the processes the school will follow in the event of an incident.

## **7.5 If you have concerns about extremism**

Radicalisation refers to the process by which a person comes to support terrorism and extremist ideologies associated with terrorist groups

Extremism is vocal or active opposition to fundamental British values, such as democracy, the rule of law, individual liberty, and mutual respect and tolerance of different faiths and beliefs. This also includes calling for the death of members of the armed forces

- Terrorism is an action that:
  - Endangers or causes serious violence to a person/people;
  - Causes serious damage to property; or
  - Seriously interferes or disrupts an electronic system

The use or threat of terrorism must be designed to influence the government or to intimidate the public and is made for the purpose of advancing a political, religious or ideological cause.

Schools have a duty to prevent children from being drawn into terrorism. The DSL will undertake Prevent awareness training and make sure that staff have access to appropriate training to equip them to identify children at risk.

We will assess the risk of children in our school being drawn into terrorism. This assessment will be based on an understanding of the potential risk in our local area, in collaboration with our local safeguarding partners and local police force.

We will ensure that suitable internet filtering is in place, and equip our pupils to stay safe online at school and at home.

There is no single way of identifying an individual who is likely to be susceptible to an extremist ideology. Radicalisation can occur quickly or over a long period.

Staff will be alert to changes in pupils' behaviour.

The government website Educate Against Hate and charity NSPCC say that signs that a pupil is being radicalised can include:

- Refusal to engage with, or becoming abusive to, peers who are different from themselves
- Becoming susceptible to conspiracy theories and feelings of persecution
- Changes in friendship groups and appearance
- Rejecting activities they used to enjoy
- Converting to a new religion
- Isolating themselves from family and friends
- Talking as if from a scripted speech
- An unwillingness or inability to discuss their views
- A sudden disrespectful attitude towards others
- Increased levels of anger
- Increased secretiveness, especially around internet use
- Expressions of sympathy for extremist ideologies and groups, or justification of their actions
- Accessing extremist material online, including on Facebook or Twitter
- Possessing extremist literature

- Being in contact with extremist recruiters and joining, or seeking to join, extremist organisations

Children who are at risk of radicalisation may have low self-esteem, or be victims of bullying or discrimination. It is important to note that these signs can also be part of normal teenage behaviour – staff should have confidence in their instincts and seek advice if something feels wrong.

If staff are concerned about a pupil, they will follow our procedures, including discussing their concerns with the DSL. If a child is not suffering or likely to suffer from harm, or in immediate danger, where possible speak to the DSL first to agree a course of action.

If in exceptional circumstances the DSL is not available, this should not delay appropriate action being taken. Speak to a member of the senior leadership team and/or seek advice from local authority PREVENT Team. Inform the DSL or deputy as soon as practically possible after the referral.

Where there is a concern, the DSL will consider the level of risk and decide which agency to make a referral to. This could include Channel, the government’s programme for identifying and supporting individuals at risk of being drawn into terrorism, or the local authority PREVENT Education officer.

The Department for Education also has a dedicated telephone helpline, 020 7340 7264, which school staff and governors can call to raise concerns about extremism with respect to a pupil. You can also email [counter.extremism@education.gov.uk](mailto:counter.extremism@education.gov.uk). Note that this is not for use in emergency situations.

In an emergency, call 999 or the confidential anti-terrorist hotline on 0800 789 321 if you:

- Think someone is in immediate danger
- Think someone may be planning to travel to join an extremist group
- See or hear something that may be terrorist-related

## **7.6 If you have a mental health concern**

Mental health problems can, in some cases, be an indicator that a child has suffered or is at risk of suffering abuse, neglect or exploitation.

Staff will be alert to behavioural signs that suggest a child may be experiencing a mental health problem or be at risk of developing one.

If you have a mental health concern about a child that is also a safeguarding concern, take immediate action by following the steps in section 7.4.

If you have a mental health concern that is not also a safeguarding concern, speak to the DSL to agree a course of action.

All staff are trained in identifying Mental Health through Mental First Aid for Children, England. The school also work closely with the Child & Adolescent Mental Health Service (CAMHS) – 02084832050

## **7.7 If you discover that FGM has taken place or a pupil is at risk of FGM**

The Department for Education’s Keeping Children Safe in Education explains that FGM comprises “all procedures involving partial or total removal of the external female genitalia, or other injury to the female genital organs”.

FGM is illegal in the UK and a form of child abuse with long-lasting, harmful consequences. It is also known as ‘female genital cutting’, ‘circumcision’ or ‘initiation’.

Possible indicators that a pupil has already been subjected to FGM, and factors that suggest a pupil may be at risk, are set out in appendix 4.

Any teacher who discovers (either through disclosure by the victim or visual evidence) that an act of FGM appears to have been carried out on a pupil under 18 must immediately report this to the police, personally.

This is a statutory duty, and teachers will face disciplinary sanctions for failing to meet it.

Unless they have been specifically told not to disclose, they should also discuss the case with the DSL and involve children's social care as appropriate.

Any other member of staff who discovers that an act of FGM appears to have been carried out on a pupil under 18 must speak to the DSL and follow our local safeguarding procedures.

The duty for teachers mentioned above does not apply in cases where a pupil is at risk of FGM or FGM is suspected but is not known to have been carried out. Staff should not examine pupils.

Any member of staff who suspects a pupil is at risk of FGM or suspects that FGM has been carried out or discovers that a pupil appears to have been a victim of FGM must speak to the DSL and follow our local safeguarding procedures as follows:

Call Children's Social Care team on 0208 583 6600

The DSL will ensure that staff have access to appropriate training to equip them to be alert to children affected by FGM or at risk of FGM.

Indicators that FGM has already occurred include:

- A pupil confiding in a professional that FGM has taken place
- A mother/family member disclosing that FGM has been carried out
- A family/pupil already being known to social services in relation to other safeguarding issues
- A girl:
  - Having difficulty walking, sitting or standing, or looking uncomfortable
  - Finding it hard to sit still for long periods of time (where this was not a problem previously)
  - Spending longer than normal in the bathroom or toilet due to difficulties urinating
  - Having frequent urinary, menstrual or stomach problems
  - Avoiding physical exercise or missing PE
  - Being repeatedly absent from school, or absent for a prolonged period
  - Demonstrating increased emotional and psychological needs – for example, withdrawal or depression, or significant change in behaviour
  - Being reluctant to undergo any medical examinations
  - Asking for help, but not being explicit about the problem
  - Talking about pain or discomfort between her legs

Potential signs that a pupil may be at risk of FGM include:

- The girl's family having a history of practising FGM (this is the biggest risk factor to consider)
- FGM being known to be practised in the girl's community or country of origin
- A parent or family member expressing concern that FGM may be carried out
- A family not engaging with professionals (health, education or other) or already being known to social care in relation to other safeguarding issues
- A girl:
  - Having a mother, older sibling or cousin who has undergone FGM
  - Having limited level of integration within UK society
  - Confiding to a professional that she is to have a "special procedure" or to attend a special occasion to "become a woman"
  - Talking about a long holiday to her country of origin or another country where the practice is prevalent, or parents stating that they or a relative will take the girl out of the country for a prolonged period
  - Requesting help from a teacher or another adult because she is aware or suspects that she is at immediate risk of FGM
  - Talking about FGM in conversation – for example, a girl may tell other children about it (although it is important to take into account the context of the discussion)
  - Being unexpectedly absent from school
  - Having sections missing from her 'red book' (child health record) and/or attending a travel clinic or equivalent for vaccinations/anti-malarial medication

The above indicators and risk factors are not intended to be exhaustive.

## 7.8 Forced Marriage

Forcing a person into marriage is a crime. A forced marriage is one entered into without the full and free consent of one or both parties and where violence, threats, or any other form of coercion is used to cause a person to enter into a marriage. Threats can be physical or emotional and psychological.

Staff will receive training around forced marriage and the presenting symptoms. We are aware of the 'one chance' rule, i.e., we may only have one chance to speak to the potential victim and only one chance to save them.

If a member of staff suspects that a pupil or parent is being forced into marriage, they will speak to the pupil about their concerns in a secure and private place. They will then report this to the DSL.

The DSL will:

- Speak to the pupil about the concerns in a secure and private place
- Activate the local safeguarding procedures and refer the case to the local authority's designated officer
- Seek advice from the Forced Marriage Unit on 020 7008 0151 or [fmufco.gov.uk](mailto:fmufco.gov.uk)
- Refer the pupil to an education welfare officer, pastoral tutor, learning mentor, or school counsellor, as appropriate

## 7.9 Honour Based Violence (HBV)

HBV is a violent crime or incident which may have been committed to protect or defend the honour of the family or community. It is often linked to family members or acquaintances who mistakenly believe someone has brought shame to their family or community by doing something that is not in keeping with traditional beliefs or their culture. HBV can include domestic abuse, threats of violence, sexual or psychological abuse, being held against your will, FGM, forced marriage and practices such as breast ironing. All forms of HBV are abuse and should be treated as any other type of abuse and reported immediately to the DSL. HBV might be committed against people who:

- become involved with a boyfriend or girlfriend from a different culture or religion want to get out of an arranged marriage
- want to get out of a forced marriage
- wear clothes or take part in activities that are not traditional within their culture

HBV can affect both sexes although women and girls are the most common victims

## 7.10 Child criminal exploitation and child sexual exploitation

**Child criminal exploitation (CCE)** is a form of abuse where an individual or group takes advantage of an imbalance of power to coerce, control, manipulate or deceive a child into criminal activity, in exchange for something the victim needs or wants, and/or for the financial or other advantage of the perpetrator or facilitator, and/or through violence or the threat of violence.

The abuse can be perpetrated by males or females, and children or adults. It can be a one-off occurrence or a series of incidents over time, and range from opportunistic to complex organised abuse.

The victim can be exploited even when the activity appears to be consensual. It does not always involve physical contact and can happen online. For example, young people may be forced to work in cannabis factories, coerced into moving drugs or money across the country (county lines), forced to shoplift or pickpocket, or to threaten other young people.

Indicators of CCE can include a child:

- Appearing with unexplained gifts or new possessions
- Associating with other young people involved in exploitation
- Suffering from changes in emotional wellbeing
- Misusing drugs and alcohol

- Going missing for periods of time or regularly coming home late
- Regularly missing school or education
- Not taking part in education

If a member of staff suspects CCE, they will discuss this with the DSL. The DSL will trigger the local safeguarding procedures, including a referral to the local authority's children's social care team and the police, if appropriate.

**Child sexual exploitation (CSE)** is a form of abuse where an individual or group takes advantage of an imbalance of power to coerce, manipulate or deceive a child into sexual activity, in exchange for something the victim needs or wants and/or for the financial advantage or increased status of the perpetrator or facilitator. It may, or may not, be accompanied by violence or threats of violence.

The abuse can be perpetrated by males or females, and children or adults. It can be a one-off occurrence or a series of incidents over time, and range from opportunistic to complex organised abuse.

The victim can be exploited even when the activity appears to be consensual. Children or young people who are being sexually exploited may not understand that they are being abused. They often trust their abuser and may be tricked into believing they are in a loving, consensual relationship.

CSE can include both physical contact (penetrative and non-penetrative acts) and non-contact sexual activity. It can also happen online. For example, young people may be persuaded or forced to share sexually explicit images of themselves, have sexual conversations by text, or take part in sexual activities using a webcam. CSE may also occur without the victim's immediate knowledge, for example through others copying videos or images.

In addition to the CCE indicators above, indicators of CSE can include a child:

- Having an older boyfriend or girlfriend
- Suffering from sexually transmitted infections or becoming pregnant

If a member of staff suspects CSE, they will discuss this with the DSL. The DSL will trigger the local safeguarding procedures, including a referral to the local authority's children's social care team and the police, if appropriate.

## 7.11 Domestic abuse

Children can witness and be adversely affected by domestic abuse and/or violence at home where it occurs between family members. In some cases, a child may blame themselves for the abuse or may have had to leave the family home as a result.

Exposure to domestic abuse and/or violence can have a serious, long-lasting emotional and psychological impact on children.

If police are called to an incident of domestic abuse and any children in the household have experienced the incident, the police will inform the key adult in school (usually the designated safeguarding lead) before the child or children arrive at school the following day.

The DSL will provide support according to the child's needs and update records about their circumstances.

## 7.12 Homelessness

Being homeless or being at risk of becoming homeless presents a real risk to a child's welfare.

The DSL and / or DDSL will be aware of contact details and referral routes in to the local housing authority so they can raise/progress concerns at the earliest opportunity (where appropriate and in accordance with local procedures).

Where a child has been harmed or is at risk of harm, the DSL will also make a referral to children's social care.

## 7.13 Children missing in Education

A child going missing from education (particularly on repeat occasions) is a potential indicator of abuse or neglect and may also be an indicator of travelling to conflict zones, sexual exploitation, FGM and forced marriage. School will inform the local authority of any pupil who is going to be deleted from the admission register where they:

- are being home educated



- have ceased to attend and no longer live within reasonable distance of the school
- have been certified by the school medical officer as unfit to attend school before ceasing to be of compulsory school age
- are in custody for more than four months and school does not believe they will be returning to school after the end of that period; or
- have been permanently excluded

All schools must inform the local authority of any pupil who fails to attend school regularly, or has been absent for a continuous period of 3 school days or more. The school attendance and welfare officer will do this as part of their on-going absence checks.

### **7.14 Non-collection of children**

If a child is not collected at the end of the session/day, we will:

Make all attempts to contact the parents and then the those who the parents have given us as their emergency contacts (at least 3). If we are unable to contact anyone to collect the child/ren then we will call Children's Service for support and advice.

### **7.15 Missing pupils**

Our procedures are designed to ensure that a missing child is found and returned to effective supervision as soon as possible. If a child goes missing, we will:

Endeavour to find the child by looking at the last place the child was seen. Contacting the Local police for help and support.

---

## ***8. Communicating with Parents***

---

The school makes parents aware, through the school website, home visits and on any other appropriate occasions that there may be times when the school will need to take appropriate steps to ensure a child's safety. The school has a responsibility to share concerns with appropriate agencies.

It is the school's policy to involve parents and to work in partnership with them wherever possible and this will be part of the child protection procedures in supporting the child and offering advice and support to the parents/carers if at all possible.

---

## ***9. Transfer of Pupil Records***

---

When pupils move to another school, all paperwork will be transferred to the new school confidentially by recorded post. When children move to this school, information will be sought as to whether there is any concerns or social service involvement.

---

## ***10. The use of Restraint***

---

Restraint is defined as "The positive application of force with the intention of overpowering the child. That is in order to protect a child from harming himself or others or seriously damaging property" It will only be used when all other methods have failed.

Legally a child or young person can only be restrained if it can be shown that there is a significant risk of the child or young person injuring him/herself or others by his/her actions.

Restraint must only be done in the presence of at least one other adult.

Any child who is physically restrained must receive a clear explanation of why they were restrained in a language and format which they can understand and at an appropriate time after the event.

Parents (or those with parental responsibility) must be informed of any incident in which their dependent child was the subject of physical restraint.

Staff will receive training in the correct way to restrain a child.

All physical restraints are then recorded in the red book held by the Inclusion Leader.

---

## **11. E-Safety**

---

Anyone who is concerned that a child's safety is at risk because you suspect someone is using communication technologies (such as social networking sites) to make inappropriate contact with the child:

1. Reports to and discusses the issue with the named Designated Safeguarding Lead, who contacts the child's parents, CEOP (<http://www.ceop.gov.uk>), the police, social services and/or the LA e-safety officer as appropriate;

2. Advises the child on how to terminate the communication and saves all evidence;

We ensure that children are confident in a no-blame culture when it comes to reporting inappropriate incidents involving the internet or mobile technology: they must be able to do this without fear.

All staff, employees, Governors, parents and pupils are asked to sign the school's Acceptable Use Policy (AUP) as acceptance of the Terms and Conditions of the ICT & Computing Usage Policy.

The school's computer facilities will be monitored to ensure this policy is adhered to and that these facilities are used properly.

Any information (including personal emails, documents, etc) within the school's network or equipment can be inspected, at any time, without notice.

---

## **12. Allegations against staff, supply teachers or volunteers**

---

If you have concerns about a member of staff (including a supply teacher or volunteer), or an allegation is made about a member of staff (including a supply teacher or volunteer) posing a risk of harm to children, speak to the headteacher. If the concerns/allegations are about the headteacher, speak to the chair of governors.

This section of this policy applies to all cases in which it is alleged that a current member of staff, including a supply teacher or volunteer, has:

- Behaved in a way that has harmed a child, or may have harmed a child, or
- Possibly committed a criminal offence against or related to a child, or
- Behaved towards a child or children in a way that indicates he or she may pose a risk of harm to children, or
- Behaved or may have behaved in a way that indicates they may not be suitable to work with children

It applies regardless of whether the alleged abuse took place in the school. Allegations against a teacher who is no longer teaching and historical allegations of abuse will be referred to the police.

We will deal with any allegation of abuse against a member of staff or volunteer very quickly, in a fair and consistent way that provides effective child protection while also supporting the individual who is the subject of the allegation.

Our procedures for dealing with allegations will be applied with common sense and judgement.

Suspension of the accused until the case is resolved

Suspension will not be the default position, and will only be considered in cases where there is reason to suspect that a child or other children is/are at risk of harm, or the case is so serious that it might be grounds for dismissal. In such cases, we will only suspend an individual if we have considered all other options available and there is no reasonable alternative.

Based on an assessment of risk, we will consider alternatives such as:

- Redeployment within the school so that the individual does not have direct contact with the child or children concerned
- Providing an assistant to be present when the individual has contact with children
- Redeploying the individual to alternative work in the school so that they do not have unsupervised access to children
- Moving the child or children to classes where they will not come into contact with the individual, making it clear that this is not a punishment and parents have been consulted
- Temporarily redeploying the individual to another role in a different location, for example to an alternative school or other work for the Local Authority.

### **Definitions for outcomes of allegation investigations**

- Substantiated: there is sufficient evidence to prove the allegation
- Malicious: there is sufficient evidence to disprove the allegation and there has been a deliberate act to deceive
- False: there is sufficient evidence to disprove the allegation
- Unsubstantiated: there is insufficient evidence to either prove or disprove the allegation (this does not imply guilt or innocence)
- Unfounded: to reflect cases where there is no evidence or proper basis which supports the allegation being made

### **Procedure for dealing with allegations**

In the event of an allegation that meets the criteria above, the headteacher (or chair of governors where the headteacher is the subject of the allegation) – the ‘case manager’ – will take the following steps:

- Immediately discuss the allegation with the LADO at the local authority. This is to consider the nature, content and context of the allegation and agree a course of action, including whether further enquiries are necessary to enable a decision on how to proceed, and whether it is necessary to involve the police and/or children’s social care services. (The case manager may, on occasion, consider it necessary to involve the police before consulting the designated officer – for example, if the accused individual is deemed to be an immediate risk to children or there is evidence of a possible criminal offence. In such cases, the case manager will notify the designated officer as soon as practicably possible after contacting the police)
- Inform the accused individual of the concerns or allegations and likely course of action as soon as possible after speaking to the designated officer (and the police or children’s social care services, where necessary). Where the police and/or children’s social care services are involved, the case manager will only share such information with the individual as has been agreed with those agencies
- Where appropriate (in the circumstances described above), carefully consider whether suspension of the individual from contact with children at the school is justified or whether alternative arrangements such as those outlined above can be put in place. Advice will be sought from the designated officer, police and/or children’s social care services, as appropriate
- If immediate suspension is considered necessary, agree and record the rationale for this with the designated officer. The record will include information about the alternatives to suspension that have been considered, and why they were rejected. Written confirmation of the suspension will be provided

to the individual facing the allegation or concern within 1 working day, and the individual will be given a named contact at the school and their contact details

- If it is decided that no further action is to be taken in regard to the subject of the allegation or concern, record this decision and the justification for it and agree with the designated officer what information should be put in writing to the individual and by whom, as well as what action should follow both in respect of the individual and those who made the initial allegation
- If it is decided that further action is needed, take steps as agreed with the designated officer to initiate the appropriate action in school and/or liaise with the police and/or children's social care services as appropriate
- Provide effective support for the individual facing the allegation or concern, including appointing a named representative to keep them informed of the progress of the case and considering what other support is appropriate. At this time the individual can contact their trade union for advice, seek support from Education Support Partnership (08000 562 561) or the named contact at the school.
- Inform the parents or carers of the child/children involved about the allegation as soon as possible if they do not already know (following agreement with children's social care services and/or the police, if applicable). The case manager will also inform the parents or carers of the requirement to maintain confidentiality about any allegations made against teachers (where this applies) while investigations are ongoing. Any parent or carer who wishes to have the confidentiality restrictions removed in respect of a teacher will be advised to seek legal advice
- Keep the parents or carers of the child/children involved informed of the progress of the case and the outcome, where there is not a criminal prosecution, including the outcome of any disciplinary process (in confidence)
- Make a referral to the DBS where it is thought that the individual facing the allegation or concern has engaged in conduct that harmed or is likely to harm a child, or if the individual otherwise poses a risk of harm to a child

If the school is made aware that the secretary of state has made an interim prohibition order in respect of an individual, we will immediately suspend that individual from teaching, pending the findings of the investigation by the Teaching Regulation Agency.

Where the police are involved, wherever possible the governing body will ask the police at the start of the investigation to obtain consent from the individuals involved to share their statements and evidence for use in the school's disciplinary process, should this be required at a later point.

### **Additional considerations for supply staff**

If there are concerns or an allegation is made against someone not directly employed by the school, such as supply staff provided by an agency, we will take the actions below in addition to our standard procedures.

- We will not decide to stop using a supply teacher due to safeguarding concerns without finding out the facts and liaising with our local authority designated officer to determine a suitable outcome
- The governing board will discuss with the agency whether it is appropriate to suspend the supply teacher, or redeploy them to another part of the school, while the school carries out the investigation
- We will involve the agency fully, but the school will take the lead in collecting the necessary information and providing it to the local authority designated officer as required
- We will address issues such as information sharing, to ensure any previous concerns or allegations known to the agency are taken into account (we will do this, for example, as part of the allegations management meeting or by liaising directly with the agency where necessary)

When using an agency, we will inform them of our process for managing allegations, and keep them updated about our policies as necessary, and will invite the agency's HR manager or equivalent to meetings as appropriate.

## **Timescales**

- Any cases where it is clear immediately that the allegation is unsubstantiated or malicious will be resolved within 1 week
- If the nature of an allegation does not require formal disciplinary action, we will institute appropriate action within 3 working days
- If a disciplinary hearing is required and can be held without further investigation, we will hold this within 15 working days

## **Specific actions**

### **Action following a criminal investigation or prosecution**

The case manager will discuss with the local authority's designated officer whether any further action, including disciplinary action, is appropriate and, if so, how to proceed, taking into account information provided by the police and/or children's social care services.

### **Conclusion of a case where the allegation is substantiated**

If the allegation is substantiated and the individual is dismissed or the school ceases to use their services, or the individual resigns or otherwise ceases to provide their services, the case manager and the school's personnel adviser will discuss with the designated officer whether to make a referral to the DBS for consideration of whether inclusion on the barred lists is required. If they think that the individual has engaged in conduct that has harmed (or is likely to harm) a child, or if they think the person otherwise poses a risk of harm to a child, they must make a referral to the DBS.

If the individual concerned is a member of teaching staff, the case manager and personnel adviser will discuss with the designated officer whether to refer the matter to the Teaching Regulation Agency to consider prohibiting the individual from teaching.

### **Individuals returning to work after suspension**

If it is decided on the conclusion of a case that an individual who has been suspended can return to work, the case manager will consider how best to facilitate this.

The case manager will also consider how best to manage the individual's contact with the child or children who made the allegation, if they are still attending the school.

### **Unsubstantiated or malicious allegations**

If an allegation is shown to be deliberately invented, or malicious, the headteacher, or other appropriate person in the case of an allegation against the headteacher, will consider whether any disciplinary action is appropriate against the pupil(s) who made it, or whether the police should be asked to consider whether action against those who made the allegation might be appropriate, even if they are not a pupil.

## **Confidentiality**

The school will make every effort to maintain confidentiality and guard against unwanted publicity while an allegation is being investigated or considered.

The case manager will take advice from the local authority's designated officer, police and children's social care services, as appropriate, to agree:

- Who needs to know about the allegation and what information can be shared

- How to manage speculation, leaks and gossip, including how to make parents or carers of a child/children involved aware of their obligations with respect to confidentiality
- What, if any, information can be reasonably given to the wider community to reduce speculation
- How to manage press interest if, and when, it arises

## Record-keeping

The case manager will maintain clear records about any case where the allegation or concern meets the criteria above and store them on the individual's confidential personnel file for the duration of the case. Such records will include:

- A clear and comprehensive summary of the allegation
- Details of how the allegation was followed up and resolved
- Notes of any action taken and decisions reached (and justification for these, as stated above)

If an allegation or concern is not found to have been malicious, the school will retain the records of the case on the individual's confidential personnel file, and provide a copy to the individual.

Where records contain information about allegations of sexual abuse, we will preserve these for the Independent Inquiry into Child Sexual Abuse (IICSA), for the term of the inquiry. We will retain all other records at least until the individual has reached normal pension age, or for 10 years from the date of the allegation if that is longer.

The records of any allegation that is found to be malicious will be deleted from the individual's personnel file.

## References

When providing employer references, we will not refer to any allegation that has been proven to be false, unsubstantiated or malicious, or any history of allegations where all such allegations have been proven to be false, unsubstantiated or malicious.

## Learning lessons

After any cases where the allegations are *substantiated*, we will review the circumstances of the case with the local authority's designated officer to determine whether there are any improvements that we can make to the school's procedures or practice to help prevent similar events in the future.

This will include consideration of (as applicable):

- Issues arising from the decision to suspend the member of staff
- The duration of the suspension
- Whether or not the suspension was justified
- The use of suspension when the individual is subsequently reinstated. We will consider how future investigations of a similar nature could be carried out without suspending the individual

---

## 13. Safer Recruitment and DBS checks

---

We will record all information on the checks carried out in the school's single central record (SCR). Copies of these checks, where appropriate, will be held in individuals' personnel files. We follow requirements and best practice in retaining copies of these checks, as set out below.

### New staff

When appointing new staff, we will:

- Verify their identity
- Obtain (via the applicant) an enhanced Disclosure and Barring Service (DBS) certificate, including barred list information for those who will be engaging in regulated activity (see definition below). We will not keep a copy of this for longer than 6 months
- Obtain a separate barred list check if they will start work in regulated activity before the DBS

certificate is available

- Verify their mental and physical fitness to carry out their work responsibilities
- Verify their right to work in the UK. We will keep a copy of this verification for the duration of the member of staff's employment and for 2 years afterwards
- Verify their professional qualifications, as appropriate
- Ensure they are not subject to a prohibition order if they are employed to be a teacher
- Carry out further additional checks, as appropriate, on candidates who have lived or worked outside of the UK, including (where relevant) any teacher sanctions or restrictions imposed by a European Economic Area professional regulating authority, and criminal records checks or their equivalent

We will ask for written information about previous employment history and check that information is not contradictory or incomplete.

We will seek references on all short-listed candidates, including internal candidates, before interview. We will scrutinise these and resolve any concerns before confirming appointments. The references requested will ask specific questions about the suitability of the applicant to work with children.

**Regulated activity** means a person who will be:

- Responsible, on a regular basis in a school or college, for teaching, training, instructing, caring for or supervising children; or
- Carrying out paid, or unsupervised unpaid, work regularly in a school or college where that work provides an opportunity for contact with children; or
- Engaging in intimate or personal care or overnight activity, even if this happens only once and regardless of whether they are supervised or not

### **Existing staff**

If we have concerns about an existing member of staff's suitability to work with children, we will carry out all the relevant checks as if the individual was a new member of staff. We will also do this if an individual moves from a post that is not regulated activity to one that is.

We will refer to the DBS anyone who has harmed, or poses a risk of harm, to a child or vulnerable adult where:

- We believe the individual has engaged in relevant conduct; or
- The individual has received a caution or conviction for a relevant offence, or there is reason to believe the individual has committed a listed relevant offence, under the Safeguarding Vulnerable Groups Act 2006 (Prescribed Criteria and Miscellaneous Provisions) Regulations 2009; or
- The 'harm test' is satisfied in respect of the individual (i.e., they may harm a child or vulnerable adult or put them at risk of harm); and
- The individual has been removed from working in regulated activity (paid or unpaid) or would have been removed if they had not left

All staff are identified by their school badge and the blue and silver lanyard.

### **Agency and third-party staff**

We will obtain written notification from any agency or third-party organisation that it has carried out the necessary safer recruitment checks that we would otherwise perform. We will also check that the person presenting themselves for work is the same person on whom the checks have been made.

All supply and agency staff will be asked to wear a visitor badge with a green lanyard.

### **Contractors**

We will ensure that any contractor, or any employee of the contractor, who is to work at the school has had the appropriate level of DBS check (this includes contractors who are provided through a PFI or similar contract). This will be:

- An enhanced DBS check with barred list information for contractors engaging in regulated activity

- An enhanced DBS check, not including barred list information, for all other contractors who are not in regulated activity but whose work provides them with an opportunity for regular contact with children

We will obtain the DBS check for self-employed contractors.

We will not keep copies of such checks for longer than 6 months.

Contractors who have not had any checks will not be allowed to work unsupervised or engage in regulated activity under any circumstances.

We will check the identity of all contractors and their staff on arrival at the school. They will be asked to sign in and wear a visitors badge with a blue lanyard whilst on site.

For self-employed contractors such as music teachers or sports coaches, we will ensure that appropriate checks are carried out to ensure that individuals are not disqualified under the 2018 Childcare Disqualification Regulations and Childcare Act 2006. Where we decide that an individual falls outside of the scope of these regulations and we do not carry out such checks, we will retain a record of our assessment. This will include our evaluation of any risks and control measures put in place, and any advice sought.

### **Trainee/student teachers**

Where applicants for initial teacher training are salaried by us, we will ensure that all necessary checks are carried out.

Where trainee teachers are fee-funded, we will obtain written confirmation from the training provider that necessary checks have been carried out and that the trainee has been judged by the provider to be suitable to work with children.

In both cases, this includes checks to ensure that individuals are not disqualified under the 2018 Childcare Disqualification Regulations and Childcare Act 2006.

### **Volunteers**

We will:

- Never leave an unchecked volunteer unsupervised or allow them to work in regulated activity
- Obtain an enhanced DBS check with barred list information for all volunteers who are new to working in regulated activity
- Carry out a risk assessment when deciding whether to seek an enhanced DBS check without barred list information for any volunteers not engaging in regulated activity. We will retain a record of this risk assessment
- Ensure that appropriate checks are carried out to ensure that individuals are not disqualified under the 2018 Childcare Disqualification Regulations and Childcare Act 2006. Where we decide that an individual falls outside of the scope of these regulations and we do not carry out such checks, we will retain a record of our assessment. This will include our evaluation of any risks and control measures put in place, and any advice sought

Volunteers will be asked to sign in and wear a grey lanyard whilst on site.

### **Governors**

All governors will have an enhanced DBS check without barred list information.

They will have an enhanced DBS check with barred list information if working in regulated activity.

All governors will also have a section 128 check (as a section 128 direction disqualifies an individual from being a maintained school governor).

When governors are visiting the school, they will be asked to sign in and wear an orange lanyard with a visitor badge. This is identifiable to the children and staff.



## **Staff working in alternative provision settings**

Where we place a pupil with an alternative provision provider, we obtain written confirmation from the provider that they have carried out the appropriate safeguarding checks on individuals working there that we would otherwise perform. "Safer Recruitment & Selection Policy and Procedure".

## **Checking the identity and suitability of visitors**

All visitors will be required to verify their identity to the satisfaction of the office staff and to leave their belongings, including their mobile phone(s), in a safe place during their visit.

If the visitor is unknown to the setting, we will check their credentials and reason for visiting before allowing them to enter the setting. Visitors should be ready to produce identification.

Visitors are expected to sign the visitors' book and wear a visitor's badge with a red lanyard.

Visitors to the school who are visiting for a professional purpose, such as educational psychologists and school improvement officers, will be asked to show photo ID and:

- Will be asked to show their DBS certificate, which will be checked alongside their photo ID; or
- The organisation sending the professional, such as the LA or educational psychology service, will provide prior written confirmation that an enhanced DBS check with barred list information has been carried out

All other visitors, including visiting speakers, will be accompanied by a member of staff at all times. We will not invite into the school any speaker who is known to disseminate extremist views, and will carry out appropriate checks to ensure that any individual or organisation using school facilities is not seeking to disseminate extremist views or radicalise pupils or staff.

---

## ***14. Pupils with special educational needs and disabilities***

---

We recognise that pupils with special educational needs (SEN) and disabilities can face additional safeguarding challenges. Additional barriers can exist when recognising abuse and neglect in this group, including:

- Assumptions that indicators of possible abuse such as behaviour, mood and injury relate to the child's disability without further exploration
- Pupils being more prone to peer group isolation than other pupils
- The potential for pupils with SEN and disabilities being disproportionately impacted by behaviours such as bullying, without outwardly showing any signs
- Communication barriers and difficulties in overcoming these barriers

We offer extra pastoral support for pupils with SEN and disabilities. This includes:

- Drawing and Talking therapy,
- play therapy,
- sensory room time,
- therapy pets,
- pastoral plans shared with parents,
- designated adult

---

## ***15. Pupils with a social worker***

---

Pupils may need a social worker due to safeguarding or welfare needs. We recognise that a child's experiences of adversity and trauma can leave them vulnerable to further harm as well as potentially

creating barriers to attendance, learning, behaviour and mental health.

The DSL and all members of staff will work with and support social workers to help protect vulnerable children.

Where we are aware that a pupil has a social worker, the DSL will always consider this fact to ensure any decisions are made in the best interests of the pupil's safety, welfare and educational outcomes. For example, it will inform decisions about:

- Responding to unauthorised absence or missing education where there are known safeguarding risks
- The provision of pastoral and/or academic support

---

## ***16. Looked-after and previously looked-after children***

---

We will ensure that staff have the skills, knowledge and understanding to keep looked-after children and previously looked-after children safe. In particular, we will ensure that:

- Appropriate staff have relevant information about children's looked after legal status, contact arrangements with birth parents or those with parental responsibility, and care arrangements
- The DSL has details of children's social workers and relevant virtual school heads

We have appointed a designated teacher, Lyn Gray- Headteacher who is responsible for promoting the educational achievement of looked-after children and previously looked-after children in line with statutory guidance.

The designated teacher is appropriately trained and has the relevant qualifications and experience to perform the role.

As part of their role, the designated teacher will:

- Work closely with the DSL to ensure that any safeguarding concerns regarding looked-after and previously looked-after children are quickly and effectively responded to
- Work with virtual school heads to promote the educational achievement of looked-after and previously looked-after children, including discussing how pupil premium plus funding can be best used to support looked-after children and meet the needs identified in their personal education plans

---

## ***17. Mobile phones and cameras***

---

Staff are allowed to bring their personal phones to school for their own use, but will limit such use to non-contact time when pupils are not present. Staff members' personal phones will remain in their bags or cupboards during contact time with pupils.

Staff will not take pictures or recordings of pupils on their personal phones or cameras. If they need to for display or on a trip, they will be immediately deleted.

We will follow the General Data Protection Regulation and Data Protection Act 2018 when taking and storing photos and recordings for use in the school.

Parents are asked to complete an opt in form each academic year to allow staff to take photographs of pupils. This may include for the website, school prospectus or displays in school. They will not be used

externally without permission.

All photographs are stored on the school server on the multi-media drive and are password protected.

Children in Early Years settings are photographed regularly as part of on-going assessment and evidence collation of their learning. These are uploaded to the monitoring program – Tapestry where parents have access to their own children's profile only.

---

## ***18. Complaints and concerns about school safeguarding policies***

---

### **18.1 Complaints against staff**

Complaints against staff that are likely to require a child protection investigation will be handled in accordance with our procedures for dealing with allegations of abuse made against staff (see appendix 3).

### **18.2 Other complaints**

These are dealt with in line with the Schools Complaints policy and procedures. A copy of this policy can be found on the school website at:

[www.groveroadschool.co.uk](http://www.groveroadschool.co.uk)

### **18.3 Whistle-blowing**

If you need to raise concerns regarding the school's safeguarding practices, please refer to the Whistleblowing Policy which can be found on the school website at:

[www.groveroadschool.co.uk](http://www.groveroadschool.co.uk)

---

## ***19. Raising Awareness of this Policy***

---

**This policy links to the following school documents:**

- the School Handbook/Prospectus
- the school website
- meetings with parents/carers such as introductory meetings
- communications with home such as end of half term newsletters
- reports such as Head teacher reports to the Full Governing Body

**Related Policies:**

Safeguarding Policy Statement

Health and Safety Policy

Safer Recruitment & Selection Policy and Procedure Anti-Bullying and Behaviour Policy

ICT Usage Policy and AUP

Medical Policy

Dealing with Allegations of abuse against teachers and Staff Staff Handbook & Code of Conduct

Whistle-Blowing Policy

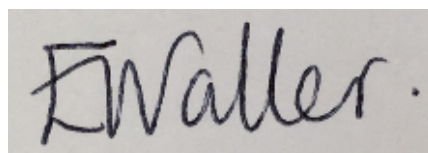
Drug and Alcohol Misuse Policy

---

## ***20. Monitoring the effectiveness of the Policy***

---

Annually the effectiveness of this policy will be reviewed by the Designated Safeguarding Lead - the Head teacher, the nominated governor and any recommendations for improvement made to the Local Governing Body. A safeguarding audit will be undertaken regularly and shared with the HSCB at the Local Authority.

A photograph of a handwritten signature in blue ink on a light-colored background. The signature appears to read "Nigel Crang".A photograph of a handwritten signature in black ink on a grey background. The signature appears to read "E. Waller".

**Head Teacher**

**Chair of Governors**

**Published 2.2.2010**

**Reviewed September 2020 (Annually)**

These appendices are based on the Department for Education's statutory guidance, *Keeping Children Safe in Education*.

### Appendix 1: types of abuse

Abuse, including neglect, and safeguarding issues are rarely standalone events that can be covered by one definition or label. In most cases, multiple issues will overlap.

**Physical abuse** may involve hitting, shaking, throwing, poisoning, burning or scalding, drowning, suffocating or otherwise causing physical harm to a child. Physical harm may also be caused when a parent or carer fabricates the symptoms of, or deliberately induces, illness in a child.

**Emotional abuse** is the persistent emotional maltreatment of a child such as to cause severe and adverse effects on the child's emotional development. Some level of emotional abuse is involved in all types of maltreatment of a child, although it may occur alone.

Emotional abuse may involve:

- Conveying to a child that they are worthless or unloved, inadequate, or valued only insofar as they meet the needs of another person
- Not giving the child opportunities to express their views, deliberately silencing them or 'making fun' of what they say or how they communicate
- Age or developmentally inappropriate expectations being imposed on children. These may include interactions that are beyond a child's developmental capability, as well as overprotection and limitation of exploration and learning, or preventing the child participating in normal social interaction
- Seeing or hearing the ill-treatment of another
- Serious bullying (including cyberbullying), causing children frequently to feel frightened or in danger, or the exploitation or corruption of children

**Sexual abuse** involves forcing or enticing a child or young person to take part in sexual activities, not necessarily involving a high level of violence, whether or not the child is aware of what is happening. The activities may involve:

- Physical contact, including assault by penetration (for example rape or oral sex) or non-penetrative acts such as masturbation, kissing, rubbing and touching outside of clothing
- Non-contact activities, such as involving children in looking at, or in the production of, sexual images, watching sexual activities, encouraging children to behave in sexually inappropriate ways, or grooming a child in preparation for abuse (including via the internet)

Sexual abuse is not solely perpetrated by adult males. Women can also commit acts of sexual abuse, as can other children.

**Neglect** is the persistent failure to meet a child's basic physical and/or psychological needs, likely to result in the serious impairment of the child's health or development. Neglect may occur during pregnancy as a result of maternal substance abuse.

Once a child is born, neglect may involve a parent or carer failing to:

- Provide adequate food, clothing and shelter (including exclusion from home or abandonment)
- Protect a child from physical and emotional harm or danger
- Ensure adequate supervision (including the use of inadequate care-givers)
- Ensure access to appropriate medical care or treatment

It may also include neglect of, or unresponsiveness to, a child's basic emotional needs.

## TEN KEY POINTS

Ten key points to follow if you suspect, or are told of, abuse.

Adults looking after children or young people should be aware of the risks of abuse (by adults or other young people), and take steps to reduce those risks.

Staff or volunteers in charge of children or young people should know what to do if they suspect that someone is being physically or sexually abused, or if someone tells them that this is happening. The following key points give a guide on what to do and not to do:

1. **Always stop and listen** straight away to someone who wants to tell you about incidents or suspicions of abuse.
2. **Write brief notes** of what they are telling you while they are speaking (these may help later if you have to remember exactly what was said) and keep your original notes, however rough and even if you wrote on the back of something else (it is what you wrote at the time that may be important later, not a tidier and improved version you wrote up afterwards).
3. **Never make a promise** that you will keep what is said confidential or secret. If you are told about abuse you have the responsibility to tell the right people to get something done about it (see below). If asked, explain that if you are going to be told something very important that needs to be sorted out, you will need to tell the people who can sort it out, but that you will only tell people who absolutely have to know.
4. **Don't ask leading questions** that might give your own ideas of what might have happened, e.g. "Did he do X to you?" Just ask, "What do you want to tell me?" or "Is there anything else you want to say?"
5. **Immediately tell the person in charge** of the group, unless they are themselves accused or suspected of abusing, and don't tell other adult or young people what you have been told. If someone has made an accusation to you about the adult in charge of a group, YOU should contact the local Social Services Department yourself and ask them what to do next.
6. **Discuss** with the person in charge whether any steps need to be taken to protect the person who has told you about the abuse (this may need to be discussed with the person who has told you).
7. **Never attempt to carry out an investigation** of suspected or alleged abuse by interviewing people, etc. Social Services and police staff are the people trained to do this. You could cause more damage and spoil possible criminal proceedings. It is your duty to refer concerns on, not to investigate.
8. As soon as possible, and certainly the same day, the person in charge should **refer the matter** to the local Social Services Department, helped by your notes. Follow their requests about what to do next. They will set up any necessary investigations and can advise you. That is their statutory job.
9. **Never think abuse is impossible** in your organisation or group, or that an accusation against someone you know well and trust is bound to be wrong.
10. Children and young people often tell other young people, rather than staff or adults, about abuse. **Make sure that your senior young people know the points on this sheet** (as much as they can at their level) as well as the responsible adults.

**Important:**

These points are no substitute for proper selection and training of adults trusted to look after children and young people, or for the organisation/groups having their own clear “child protection” procedures for their particular setting.